



# Solar Stepstone

Solar powered illuminated garden accent light

Operates automatically during nightfall



## CONTENTS

1. Introduction
2. Security instructions
3. Overview
4. Components
5. Assembling and using your product
6. Cleaning and maintenance
7. Functionality problems
8. Technical data
9. Spare parts
10. Limited 2 year warranty

**These instructions relate ONLY to the Solar Stepstone and contain important information for using the product for the first time. Please keep these instructions for later reference. They should always accompany the product in the event of transfer to a new user.**

## 1. INTRODUCTION

Thank you for purchasing the Solar Stepstone. You have purchased a product that complies with the latest and most advanced and up-to-date solar technology available.

This product complies with the European and National Standards. The relevant certificates of conformity are held by STI Group.

To preserve these standards and in order to maintain safety you should adhere to the instructions for use detailed in this manual.

## 2. SECURITY INSTRUCTIONS

In the event of any problems arising or damage occurring as a result of misuse the manufacturers warranty will be deemed cancelled. The manufacturer is not responsible for any claims or damages arising from the misuse of this product. For safety reasons and in order to maintain standards (CE) you are prohibited from altering or changing any component in the Solar Stepstone.

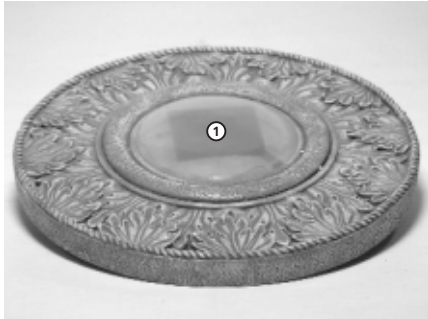
**Please follow the instructions very carefully.**

For commercial applications due care and attention must be paid to the Health and Safety Standards in your jurisdiction.

### 3. OVERVIEW

The Solar Stepstone has been designed for outdoor use. The solar module in the center part converts sunlight into electricity, which is then stored in the integral rechargeable battery pack. The light switches on automatically when it gets dark and turns itself off when it gets light or when the battery is fully discharged. The source of light comes from two premium amber LEDs (light emitting diode), which provides bright light but uses very little electricity. In order for the light to operate, the solar module needs to be placed in direct sunlight. The performance of the light e.g. the charging of the battery depends on the season.

### 4. COMPONENTS



- 1 Light unit with integral solar module, battery pack, LEDs and "on - off" switch

### 5. ASSEMBLING AND USING YOUR PRODUCT

**Unpack all components carefully.**

Turn the Solar Stepstone upside down.

**Switch set to "0" (off position):**

The solar panel does not charge the battery nor does the light function at night.

**Switch set to "1" (on position):**

The solar panel charges the battery and the light will switch on in the evening and switch off in the morning automatically.

Decide on a suitable location.

### 6. CLEANING AND MAINTENANCE

**Removing / Replacing the batteries:**

Use only original Smart Solar batteries. Turn the light unit upside down and place the solar module on a soft surface.

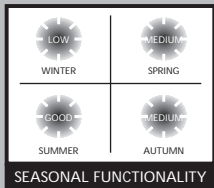
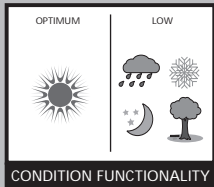
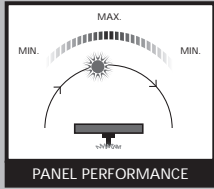
Unscrew the 4 crosshead screws from the battery box.

Disconnect the battery and take out the battery pack.

**A new battery is fitted in reverse order.**

**Please note:**

Used batteries must be disposed of carefully with regard to the environment and should NOT be put into the family waste.



Unscrew the crosshead screws



Remove the cover plate



Remove and replace the battery

## 7. FUNCTIONALITY PROBLEMS

**Light does not switch on in darkness.**

Check whether the switch is on "I" (on position).

**Another light source (eg. streetlight) simulates daylight and prevents the light from switching on automatically.**

Position the module in a darker place.

**Light does not switch on at all or only for a short time even though there has been a full day of sunshine.**

Battery is flat. Replace the rechargeable battery pack.

## 8. TECHNICAL DATA

Operation voltage:	2.4 V
Solar module:	4.2 V / 0.3 W
Light source:	Two amber LEDs
Battery:	Two 1.2 V Ni-Mh 600 mAh
Battery operation capacity:	24 h

## 9. SPARE PARTS

**Battery pack:** Item No. BP-200

## 10. LIMITED 2 YEAR WARRANTY

If within 24 months from the date of purchase this product fails due to a defect in material or workmanship, STI Group will replace or repair it free of charge.

**The warranty does not apply to:**

Damage caused by accidents, abuse, poor handling, frost or normal wear and tear. Products which have been subject to unauthorized repair or modification or the batteries used in this product.

For further information please contact your nearest service center detailed on the last page of this instruction manual.



for further information, please contact  
STI Group customer service at:

#### Corporate Office

Tel: 847 918 8558  
E-mail: [info@smartsolar.us](mailto:info@smartsolar.us)  
Website: [www.zablp.com](http://www.zablp.com)

