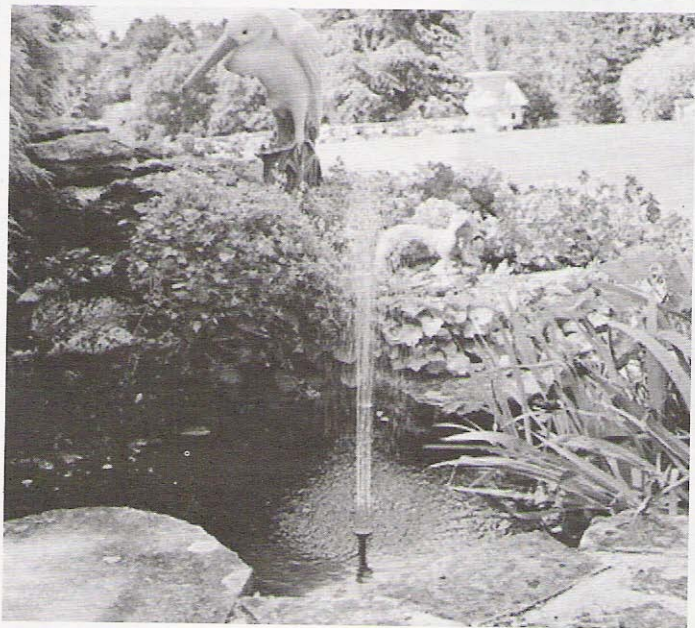




# lugano

**solar powered fountain**

operates in direct sunlight



GB

D

F

## Contents

1. Introduction
2. Security instructions
3. Overview
4. Components
5. Assembling and using your product
6. Cleaning and maintenance
7. Functionality problems
8. Technical data
9. Spare parts
10. Full 2 year warranty

These instructions relate **ONLY** to the Lugano Solar Fountain and contain important information for using the product for the first time. Please keep these instructions for later reference. They should always accompany the product in the event of transfer to a new user.

## 1. Introduction

Thank you for purchasing the Lugano Solar Fountain. You have purchased a product that complies with the latest and most up-to-date solar technology available.

This product complies with the European and National Standards. The relevant certificates of conformity are held by Smart Solar.

To preserve these standards and in order to maintain safety you should adhere to the instructions for use detailed in this manual.

## 2. Security Instructions

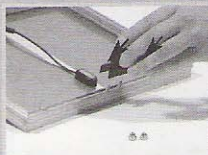
In the event of any problems arising or damage occurring as a result of misuse the manufacturers warranty will be deemed cancelled. The manufacturer is not responsible for any claims or damages arising from the misuse of this product. For safety reasons and in order to maintain standards (CE) you are prohibited from altering or changing any component in the Lugano Solar Fountain.

**Please follow the instructions very carefully.**

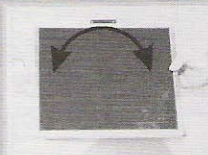
For commercial applications due care and attention must be paid to the Health and Safety Standards in your jurisdiction.



Solar panel / Stand kit



Fixing the panel holder



Wall mounted Solar panel



Stand mounted Solar panel



Standing Solar panel

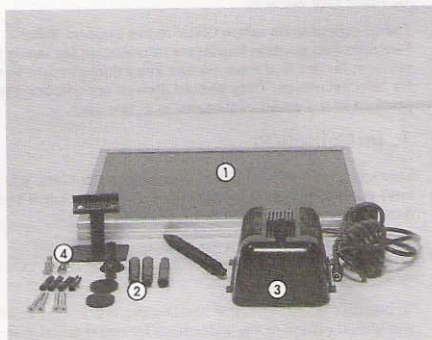
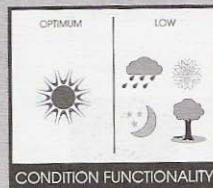
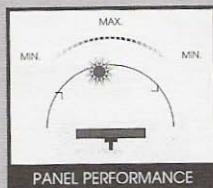
### 3. Overview

The Lugano Solar Fountain has been designed for outdoor use. The pump derives its power directly from a solar module. In order for the pump to operate, the solar module needs to be placed in direct sunlight. The performance of the pump depends on the season and the position of the solar module.

### 4. Components



Solar pump connector



- |   |  |   |                        |
|---|--|---|------------------------|
| 1 | Solar panel                                | 3 | Pump                   |
| 2 | 3 x Extension tubes with fountain head set | 4 | Solar panel holder set |

## 5. Assembling and using your product

**Unpack all components carefully.**

Unroll the pump cable.

Place the pump underwater making sure that when the pump operates, it is fully immersed underwater. Use up to 3 extension tubes to ensure the fountain head stays above the surface of the water. If this is not enough then the pump must be raised (eg. use stones or bricks to raise the pump).

**Please note:**

Should there be slight currents in your pond and the pump repeatedly overturns, it is possible to weigh down the pump by inserting stones into the filter cavity.

Insert the connector into the rear of the module.

The Lugano Solar Fountain is now ready to operate.

**Please note:**

When first used, there may be air in the pump. It can take up to 5 minutes for the air to escape.

## 6. Cleaning and maintenance

If after time the pump starts to lose power or stops working, you should check for the build up of sediment or scale in the filter or in the pump housing. The filter housing can be removed by pressing down on the top of the filter housing and unlatching the clips on the side. You can now clean the filter.

To clear the impeller, open the pump housing at the front by sliding up the front plastic cover. Do not remove the impeller. Remove any dirt or scale, which has built up and replace the cover.

The Solar module should only be cleaned with soft tissue and proprietary glass cleaning solution.

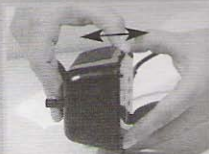
## 7. Functionality problems

**Pump does not operate even though the solar module is in full sunlight.**

- 1) No connection to the solar module - Check connection to the solar module.
- 2) Impeller is blocked - Clean the pump.

**Pump does operate but there is no water running through the fountain head.**

Check for the build up of sediment or scale in the tubes or the filter - Clean the tubes and the filter.



Open pump casing



Weigh down the pump using stones



Pump with 3 extension tubes



Remove filter from casing to clean



Remove pump impeller cover to clean



## 8. Technical Data

Operation Voltage:	12 V
Solar module:	16.8V / 5.16 W
Performance:	500 l/h
Fountain Height:	max. 120 cm (sprinkler head)
Cable:	5 m

**Important:** In winter the Lugano Solar Fountain must be stored in a dry and frost-proof environment. The pump must never be operated dry (out of water) Dry operation permanently damages the pump.

## 9. Spare Parts

- 1 Solar module:** Item No. 1124-01
- 2 Pump:** Item No. 1124-02
- 3 Fountain head set:** Item No. 1124-03

## 10. Full 2 year warranty

If within 24 months from the date of purchase this product fails due to a defect in material or workmanship. Smart Solar will replace or repair it free of charge.

### **The warranty does not apply to:**

Damage caused by accidents, abuse, poor handling, frost or normal wear and tear. Products which have been subject to unauthorized repair or modification.

For further information please contact your nearest service centre detailed on the last page of this instruction manual.